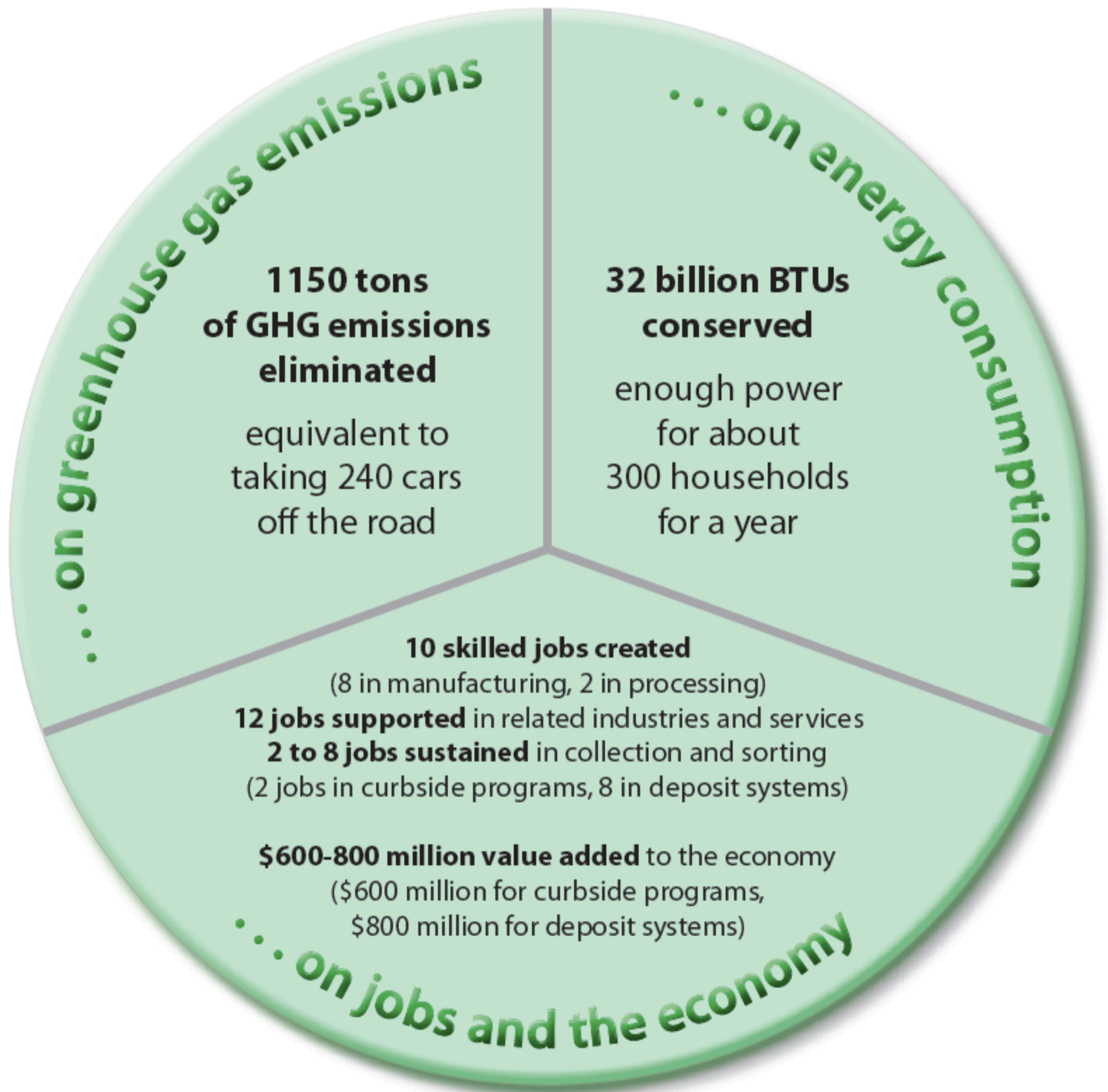


Recycling PET has an impact...

(Impacts are calculated per 1000 tons of PET reclaimed instead of landfilled)



Greenhouse gas and energy impacts are based on the use of recycled PET instead of virgin raw materials as feedstock and calculated with the EPA Waste Reduction Model (WARM) at http://www.epa.gov/climatechange/waste/calculators/Warm_Form.html.

Economic impacts are derived by NAPCOR from data in two published studies: Returning to Work: Understanding the Jobs Impacts From Different Methods of Recycling Beverage Containers, Container Recycling Institute, 2010 (<http://www.napcor.com/pdf/2011-ReturningToWork-CRIJobsReport.pdf>) and Recycling Economic Information Study Update: Delaware, Maine, Massachusetts, New York, and Pennsylvania. Final Report, Northeast Recycling Council, February 2009 (http://www.napcor.com/pdf/recycling_economic_information_study_update_2009.pdf).

